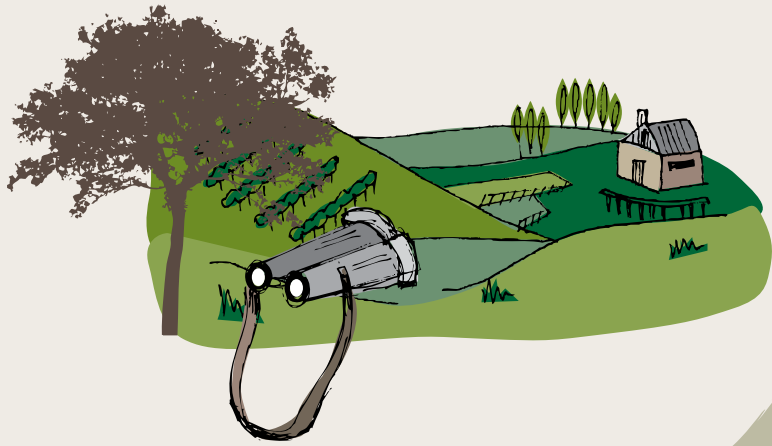


TOP VIEWS YARRA VALLEY



TOP VIEWS YARRA VALLEY

The Yarra Valley boasts a mix of breathtaking views that travel over vineyards, farmland, waterways and forest. Crisp cool mornings treat the early bird to spectacular moments as the fog rises and the hot air balloons come out to play. Find a vantage point from one of our many viewing towers and soak up the diversity of stunning landscape that unfolds in front of you. Professional or simply an enthusiast this region is a photographers paradise.



Kangaroo Ground Memorial Tower Lookout

The Kangaroo Ground War Memorial Tower is built on the highest hill in the district. It was unveiled on 11 November 1926 and is used as a fire-spotting tower in the summer. It offers 360-degree views, which take in Melbourne, the north-east suburbs and the Dandenong and Kinglake Ranges. The surrounding park has a viewing platform, toilets, picnic facilities and gardens. It is open daily and closes at dusk

Sugarloaf Reservoir Lookout

A short walk from the car park and grounds is the purpose built lookout offering panoramic vistas of the reservoir and the Kinglake Ranges.

Malleson Lookout

Malleson Lookout is located on Don Road, just out of the township of Healesville. Continue in a south-easterly direction beyond the intersection with Badger Creek Road and Badger Weir Road. About 4 km beyond this intersection (10 km from Healesville), on the right-hand side of the road, is Malleson Lookout.

Mt Donna Buang Lookout Tower

Rising to a height of 1245 metres, Mt Donna Buang offers panoramic views, snow play and tobogganing in winter and the Rainforest Gallery part way up the mountain with its spectacular skywalk aerial walkway through the tree tops.

Mt St Leonard Lookout Tower

St Leonards Road continues north as Myers Creek Road. 12 km north of Healesville is a signposted turnoff on the right into Monda Track which soon leads to a carpark from whence there is a 1.3-km walk to the summit of Mt St Leonard (1028 m) where there is a fire tower and excellent views.

Selovers Lookout

About 4.5 km east of Healesville, along the Maroondah Highway, is a turnoff on to Sealover's Lookout. It offers a perfectly elevated vantage point for taking in the impressive Maroondah reservoir and surround Ranges. This is a must stop on you drive to the Maryville and Buxton through the Black Spur Scenic Drive.

Keppel Lookout

Keppels Lookout, accessed via a walking track from the town centre or by car along Paradise Plains Road, offers stunning views of the ridge line and forests surrounding Marysville. Good views can also be enjoyed from the top of Mount Gordon Road which is accessed from the road between Marysville and Narbethong.

Lake Mountain

The most popular choice is to venture up to the 1433m summit of Lake Mountain - it has the most incredible views from several lookouts and on a clear day you can see the CBD of Melbourne. Find a spot on the plateau to stop for a picnic and soak up spectacular panoramic views of the Victorian Alps to the east, across to Melbourne and over to the surrounding foothills of the Great Dividing Range to the west.